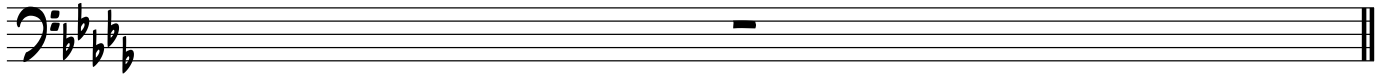


Db

♩ = 123

Promises

Calvin Harris & Sam Smith



V1

Chords: Cb Eb Db

x4

C1/2

1. 3. 2. 4.

Post 1

V2

1. 3. 2.

Post 2

1. 2.3.4. 5.

C3

1. 3. 2. 4.

Detailed description: This system contains the musical notation for the C3 part. It consists of two staves. The top staff is a bass clef with a key signature of three flats (B-flat, E-flat, A-flat) and a 3/4 time signature. It contains four measures of music. The first measure has a quarter note G2, a quarter note F2, and a quarter note E2. The second measure has a quarter note D2, a quarter note C2, and a quarter rest. The third measure has a quarter note B1, a quarter note A1, and a quarter rest. The fourth measure has a quarter note G1, a quarter note F1, and a quarter rest. A first ending bracket spans the last two measures, with '1. 3.' above the first measure and '2. 4.' above the second measure. The bottom staff is a guitar-style staff with a treble clef and a key signature of three flats. It contains four measures of guitar tablature: | 7 7 6 | 6 6 | 9 9 | 9 9 |. The first measure has a bar line at the end.

Post 3

Detailed description: This system contains the musical notation for the Post 3 part. It consists of two staves. The top staff is a bass clef with a key signature of three flats and a 3/4 time signature. It contains four measures of music. The first measure has a quarter note G2, a quarter note F2, and a quarter note E2. The second measure has a quarter note D2, a quarter note C2, and a quarter rest. The third measure has a quarter note B1, a quarter note A1, and a quarter rest. The fourth measure has a quarter note G1, a quarter note F1, and a quarter rest. The bottom staff is a guitar-style staff with a treble clef and a key signature of three flats. It contains four measures of guitar tablature: | 7 7 6 | 6 6 | 9 9 | 9 9 |. The first measure has a bar line at the end.